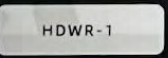
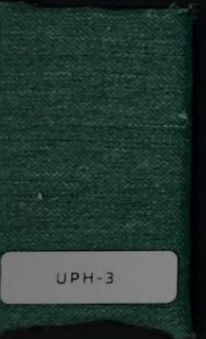
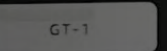
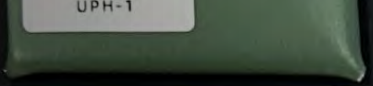
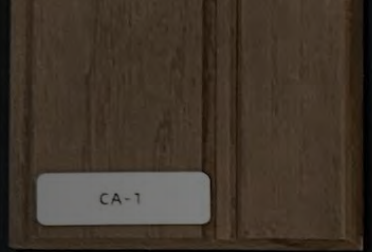
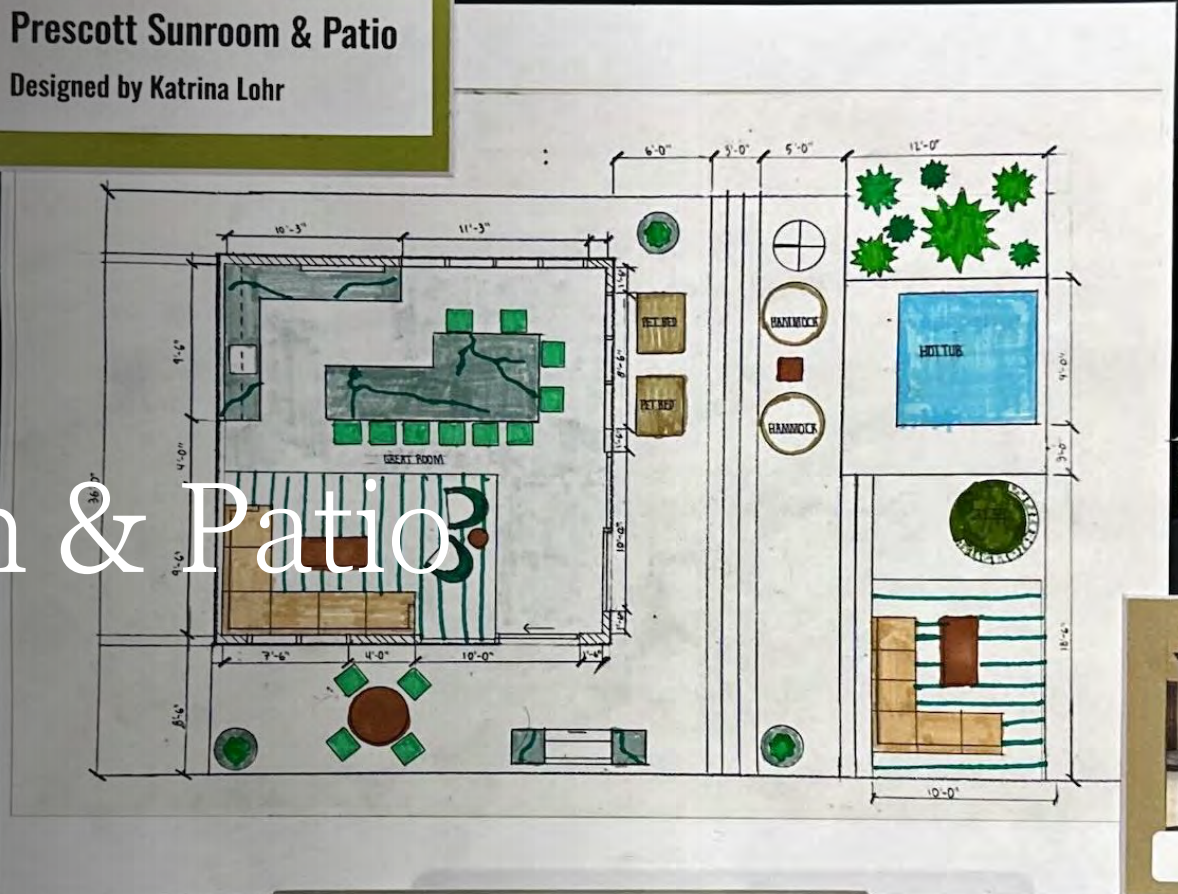


Prescott Sunroom & Patio

Prescott Sunroom & Patio
Designed by Katrina Lohr



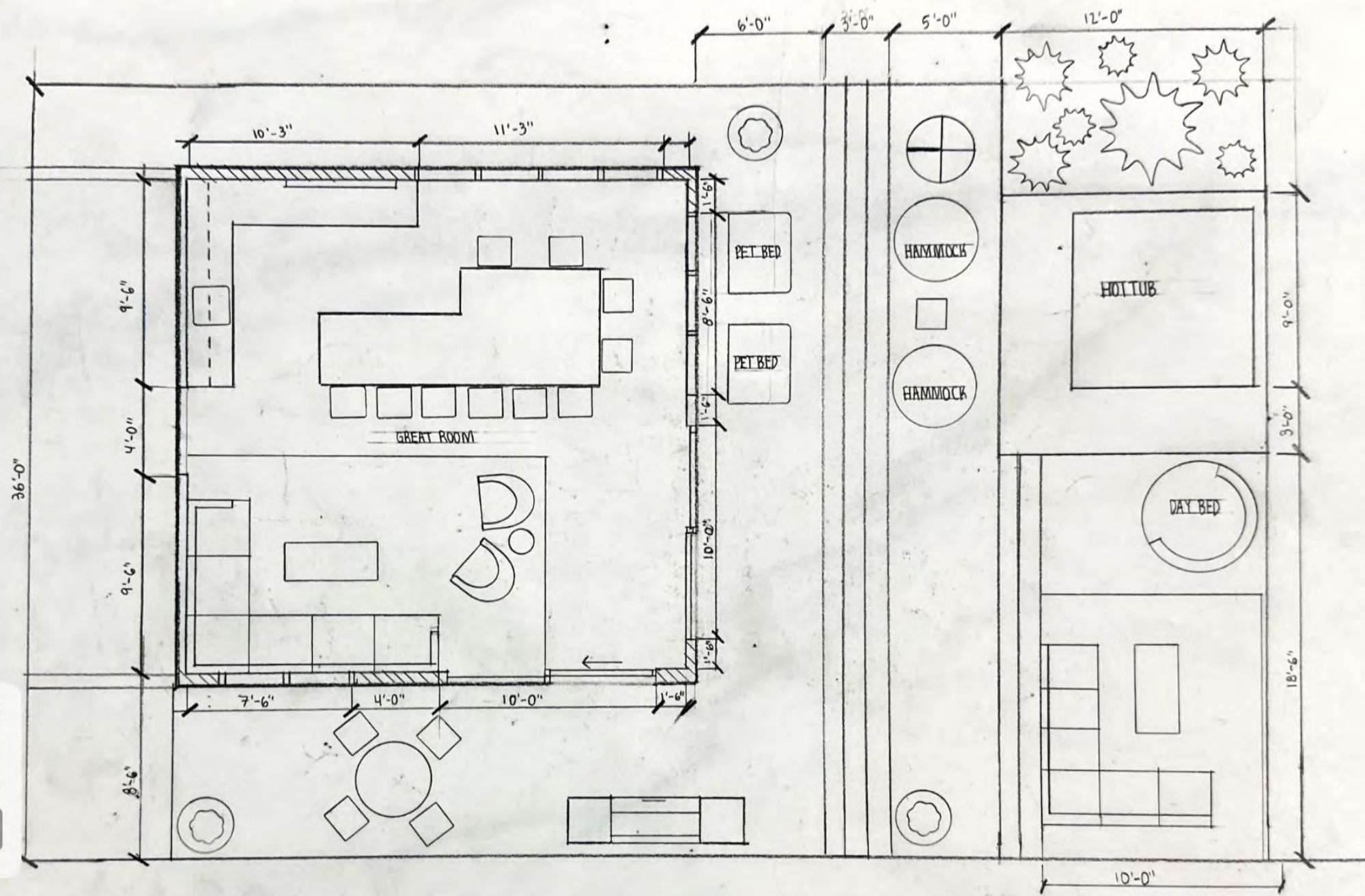
BY KATRINA LOHR

PROBLEM STATEMENT

Keith and Kelly are looking to contemporarily design the sunroom and patio in their new home in Prescott Arizona. With connection and entertainment being the focus of these adjacent spaces, the furnishings must be durable against the harsh sun, chemicals, and their two dogs. Temperature control should be considered in the color pallet and with the window treatments.

DESIGN CONCEPT

To achieve Keith and Kelly's perfect sunroom, the focus of the design will be on unity between various seating groups by the repetition of fabrics and colors. Swiveling chairs and daybeds will be incorporated to transform seating arrangements from being suited to small groups to being suited for large groups. Strategically placed accent light fixtures and furniture will create a casual yet modern feel, that makes nature the focal point of the space.







WINDOW TREATMENTS

Richloom- #5060744 Monarch Grass

Made in the USA

Cleaning Code S

43% Polyester and 57% Cotton Blend

15,000 Double Rubs

UV Resistant & Durable



FURNITURE TEXTILE – BARSTOOLS

Architex- Prescription Abbott

Made in China

Cleaning Code WS

100% Polyurethane Face, 100% Polyester Backing

Over 1,000,000 Double Rubs

Antibacterial, Anti-Microbial, & Mildew Resistant



FURNITURE TEXTILE – DAYBED

Frontgate- 161025 CPD Moss

Made in USA

Cleaning Code W

100% Acrylic

Stain and Mildew Resistant

Indoor & Outdoor Fabric- Helps with fading



FURNITURE TEXTILE – SWIVEL CHAIRS

Frontgate- 161025 LEA Leaf

Made in USA

Cleaning Code W

100% Acrylic

Stain and Mildew Resistant

Indoor & Outdoor Fabric- Helps with fading



FURNITURE TEXTILE – SOFAS

Kravet Sunbrella- 25807-1116 Beige

Made in USA

Cleaning Code W

100% Acrylic

30,000 Double Rubs

Soil & Stain Resistant Finish

Indoor & Outdoor Fabric- Helps with fading



FURNITURE TEXTILE – RUGS

Lee Jofa- GWF 3736130 Groundworks Seeth Endive

Made in USA

Cleaning Code W

99% Acrylic 1% Olefin

12,000 Double Rubs

UV & Stain Resistant

Resistant to Micro-organisms

Dries Quickly



MISC TEXTILE – DECORATIVE PILLOWS

Kravet Soleil- 31949-1613 Sands of Time Bimini

Made in USA

Cleaning Code W

100% Acrylic

15,000 Double Rubs

UV Resistant

Resistant to Micro-organisms

Water Repellent

